

CT DEEP 2018
FISHING REPORT NUMBER 7
6/7/2018



Northern Pike (*Esox lucius*)



YOU CAN FIND US DIRECTLY ON FACEBOOK. This page features a variety of information on fishing, hunting, and wildlife watching in Connecticut. The address is www.facebook.com/CTFishandWildlife.

SHARE THE EXPERIENCE
Take someone fishing

INLAND REPORT

LARGEMOUTH BASS fishing has been fair to good, post-spawn bass in a number of areas. Reports are from Bantam Lake, Cedar Lake, Congamond Lakes, Pickerel Lake, Middle Bolton Lake, Wononskopomuc Lake, Bishop Swamp, Pachaug Pond, Billings Lake, Stillwater Pond, Ball Pond, Red Cedar Lake, Winchester Lake, East Twin Lake, Pachaug Pond and Quaddick Lake.

Tournament angler reports are from Bashan Lake (good for most, tough for a few, 3.49 lb lunger), Gardner Lake (fair, 3.97 lb lunger), Gorton Pond (fair to good, not much size, 1.89 lb lunger), Pachaug Pond (fair, 2.93 lb lunger), Pattagansett Lake (fair to good, 2.68 lb lunger), Bantam Lake (“...lot of nice fish came in...postspawn”, “Awesome”; 5 lb lunger and an average weight of 2.7 lbs per fish), Candlewood Lake (fair to good for largemouth, 5.94 lb, 4.14 lb and 4.04 lb lunkers), Lake Lillinonah (fair to good, 3.89 lb lunger), and Wononskopomuc Lake (good for most, with fish averaging over 2 lbs apiece and a 3.9 lb lunger).

SMALLMOUTH BASS. Smallmouth are providing some action, with fair to good reports from Candlewood Lake, Lake Lillinonah, Lake Zoar and Lake McDonough. **Tournament angler** reports are from Bashan Lake (a few, including a 4.01 lb lunger), Candlewood Lake (fair to good), Pachaug Pond (a couple of fish, 1.69 lb lunger) and Lake Lillinonah (fair to good for many).

TROUT- RIVERS & STREAMS – Conditions for fishing should be good for the weekend. Some rain early this week refreshed stream flows, although they are now lower than is typical for early June in some areas (see *stream flow graphic on page 5*) and air temperatures continue to be favorable for keeping trout active and healthy (meaning cool). Fish are currently not temperature stressed and are distributed throughout our waters. Reports of good catches are coming in statewide, including the Natchaug River, Naugatuck River TMA, Farmington river TMA and the Housatonic River. Tough in some of the smaller waters like the Blackledge River, Blackberry River, Norwalk River, and Hammonasset River. Insect hatches were slow this week, but with a sunny and seasonable forecast for the weekend, be ready for a diversity of insects to take wing.

FREE FISHING LICENSE DAYS

CAST IT FORWARD and take someone fishing on one of our two free fishing license days. These will be on Sunday **June 17, 2018** (Father’s Day) and Saturday **August 11, 2018** (NCLI and CARE Saltwater fishing event at Fort Trumbull State Park). **Anyone can obtain a free one-day fishing license to fish each of these days.**

The free 1-day license for June 17, 2018 is available anywhere licenses are sold as well as our [sportsmen licensing system](#). Free Licenses for the August 11 date will be available starting on July 21, 2018.

Farmington River –The weekend looks good for the Farmington with comfortable flows (currently 291 CFS at Riverton plus an additional 93 CFS from the Still River). Water temperatures are now in the mid to upper 50's. A somewhat slow start to this week due to higher flows, but look from Friday through at least Tuesday for prime June fishing conditions.

Hatches/patterns. As the flows have dropped look for a boom in insect activity. Typical go-to flies this time of year include the Black Caddis and Blue Wing Olive. Others include Vitreus [a.k.a. pale evening dun] #14-16, from 5:00 pm to dark, Tan Caddis (#14-16) good all day, Sulfurs, (Invaria #14-16 hatches mid-day and Dorothea #16-18), Light Cahill (#12-18), March Brown nymphs (#10-14, during the day), Gray Fox (#10-14, afternoon), Blue Wing Olives (#18-24, mid-late afternoon), Caddis (tan #16-18, all day; green #22-26, evening), Midges (#20-32) and Pale Evening Duns (*Epeorus vitreus* #14-16, afternoon & early evenings). March Brown, Sulphur & Rusty Spinners are falling in the evenings.

Housatonic River – Flows are on the low side for late May/early June and very fishable (currently 605 CFS at Falls Village and 938 CFS at Gaylordsville). Morning water temperatures are currently in the upper 50's °F.

Hatches/patterns. Like the Farmington, Black Caddis (#10-12) March Brown (#10-12), Sulphurs (#14-18, evening), Blue Wing Olive (#16-18, cloudy days, early morning; spinner fall in evening), Cahill (#14, evenings), Adams (#12-16, evening), March Brown (#10-12, afternoon) and Gray Foxes (#14-16). Green caddis (#14-18, early morning & evening) are on the water. Streamers (such as White/Yellow Zonkers or Woolly Buggers) are good options for fishing the current flows.

TROUT-LAKES & PONDS – Trout fishing has been good in a number of areas throughout the state. Places to try include Colebrook river Lake, Crystal Lake, Mashapaug Lake, East Twin Lake, Highland Lake, Lake McDonough and West Hill Pond.

CATFISH (CHANNEL AND WHITE) are doing very well. Quality fish are available and being caught using chunk bait, live minnows, and even some soft plastics. Lots of 20+ inch fish from the Connecticut River.

CHAIN PICKEREL. Still very active. Flashy lures and Rapalas (3-5 inches) along the weed lines will attract them in many lakes and ponds throughout the state.

COMMON CARP. Steady action in all locations.

WALLEYE. No reports-

NORTHERN PIKE Good fishing in Lake Lillinonah, Pachaug Pond and Winchester Lake. As an apex predator Pike primarily feed by ambush. Look for deeper weed beds among river and creek deltas. Weeds at 4-8 foot depth is where they like to sit and wait for prey to swim by above their heads. To trigger their instinct, use flashy baits like inline spinners and keep them moving like fleeing bait fish (J. Puntty).

BLACK CRAPPIE are slowing a bit. Look for fish moving to deeper structure.

CONNECTICUT RIVER Flows remain way below early June levels (6,290 CFS) and water temperatures are moderate for this time of year. **AMERICAN SHAD** are around but not in sizable numbers, look up river for action. Willow leaves have been working. **STRIPED BASS** (schoolie-size and a few bigger fish) are being found throughout the river. **LARGEMOUTH BASS** are providing slow to moderate action in the coves from just below Hartford to Haddam. **SMALLMOUTH BASS** continue to keep anglers occupied in the Windsor/Enfield area. **CHANNEL CATFISH/WHITE CATFISH** are providing solid action throughout the Connecticut River from below Hartford to Haddam. **COMMON CARP** are providing some good action from Middletown downstream to Salmon River Cove. **BOWFIN** catches are steady in the backwaters and side coves – watch out for the teeth!

INLAND REPORT (Reported by You).

Thank you to the following for adding to our Fishing Report this Week: **INLAND REPORT:** Jeff Bochese, Hugh Fagan, Kenny Ludwig, Jim Cannon, Patrick Sullivan, Pete Pozucek, James Swiatek Jr., Andrea Nivolo, Carl Lovisololo, Rick N., Rich P., Hugh Jorgan, Edwin Bates, Paul Hyatt, Dylan Napolenone. **MARINE REPORT:** Mark Torello and Paul Hyatt.

Notable Catches Reported: 3 pound Largemouth, 5 pound Smallmouth, 21" Pickerel, Pike, Native Brookies, Nothing, double 6 pound Brown Trout, Very Large Crappie, 23 inch Channel Cat, 2.5 pound bass

How Did They Rate the Fishing?

Species	Excellent	Good	Average	Fair	Poor
Trout	4	3	1	1	2
Bass	4	5	4	3	4
Pike	1	1	0	0	1
Walleye	0	0	0	0	0
Channel Catfish	1	0	0	0	1
Panfish	1	3	1	0	0
Common Carp	0	0	0	0	0

What was HOT! Large Crank Baits at dusk, Green rubber worms, #8 egg sucking leech, Caddis larvae, #12 wet flies, swimbaits, Senko, frenchie nymph, chartreuse spinner baits, BH pheasant tail, top water poppers, mealworms

What was NOT! Jig worms, spinner baits, streamers, everything, woolly bugger, Senko, plastic worms

Good or better places to fish included: Middle Bolton Lake, Green Falls, Housatonic River, Naugatuck TMA, Fenton River, Haddam Meadows, Deep River and Chester Coves on the CT River, Pickerel Lake, McKenzie Reservoir.

Fair or worse places to fish included: Amos Lake, Salmon River, Furnace Brook, Pomperaug River, Westside Pond, Scantic River, Park Pond, Jeremy River.

Some key hatches last week: Blue Wing Olive, Caddis, Caddis, Caddis, Isonychia.

Friendly Angler Advice (unedited):

Everything last week preferred larger 4-6" crank baits with a lot of action. Color/pastern did not seem to matter as much as size and action. On Saturday in the CT river north of the Farmington, my son and I took some very nice smallies, a few schoolie stripers and some nice white perch. We saw a lot of very large carp go by throughout the day.

Had a northern water snake approach the boat, very aggressive like he wanted to get in . Scared him off with the slap of a fishing rod !

mostly 12-14 inch bass and medium size pickerel - bass were dispersed in submerged weeds and not aggressive

When the weather fluctuates and flows go up and down, be prepared to change tactics. The trout may be sulking a bit, but they still want to eat. So don't stand there presenting dry flies to fish that aren't looking up. And don't persist in drifting the same Prince nymph in the same place if nothing is happening.

I was approached by a DEP officer that was investigating an anonymous call. The person left prior to his arrival. I think the DEEP should have a see something say something campaign to address poaching issue in the state on all bodies of water. Maybe a flyer when someone gets a license or on the DEEP site.. Most people aren't aware of all the regulations and may not call it in immediately.

Fishing was poor this week. Probably due to post spawn patterns especially in the smaller bodies of water. Housatonic River in the Kent/New Milford area for Bass was terrible. Didn't catch a single bass on that stretch of river which is unusual for us. Park Pond is usually good for consistent action for Bass and didn't catch a single fish despite using several different baits (we know work) and fishing different depths. Water Temp reached the 75 degree mark at some of the smaller bodies of water this week. Didn't try too much top water which I will am hoping to try this coming week. Hopefully next week, I will have some notable catches to report.

I saw a spin guy using Rapalas to good effect. He got a couple good size trout. (15"+)

patience

Farmington is really good right now and so is the Housatonic River. Throwing the right thing is key. The Farmington River fish are very smart.

TROPHY FISH AWARD PROGRAM:

DEEP's [Trophy Fish Award Program](#) recognizes angler skill by awarding a bronze pin for your first trophy fish, a silver pin for your fifth trophy fish, and a gold pin for your tenth trophy fish. Angler of the year is awarded at our annual Trophy Fish Award Ceremony.

To see if your fish qualifies check out the criteria on page 13 of the [Angler's Guide](#). If you have caught a trophy fish be sure to fill out the affidavit (page 12 of the Angler's Guide) and submit the required photo(s) and form to us. Good luck!

FISH OF THE WEEK:



NOTES & NOTICES:

STORM DAMAGE UPDATE. Due to storm damage, the following Connecticut State Parks remain closed:

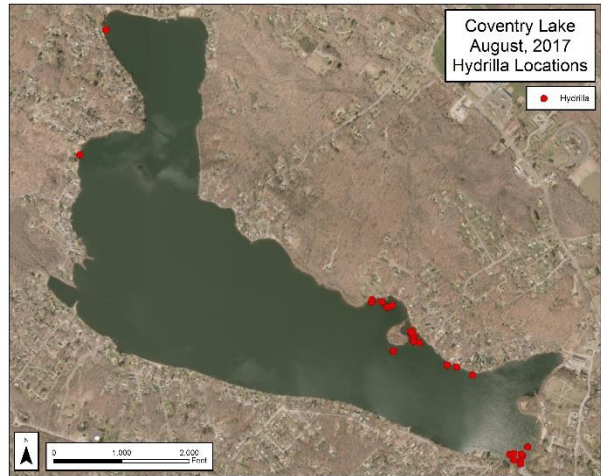
- **Sleeping Giant**, Hamden. This closure includes the Sleeping Giant TMA on the Mill River (Hamden).
- **Wharton Brook**, Wallingford. This closure includes the Wharton Brook Trout Park.

Note that both Squantz Pond State Park and the Squantz Cove boat launch are open to full use.

CONNECTICUT RIVER (invasive species alert). In 2016 hydrilla was found in the main stem Connecticut River in Glastonbury (near Glastonbury’s Riverfront Park & Boathouse). **Last year hydrilla was found at other locations along the river including Wethersfield and Crow Point coves and at a site in Enfield.** See the Coventry Lake entry below for what river users should do to prevent spread of this invasive plant to other waterbodies.

COVENTRY LAKE (invasive species alert). Hydrilla, a very highly invasive aquatic plant, has been found growing in Coventry Lake. All lake users should take extra care to check and clean their boats (including canoes, kayaks and rowing sculls), trailers, and fishing equipment before leaving the boat launch, or leaving the lakeshore.

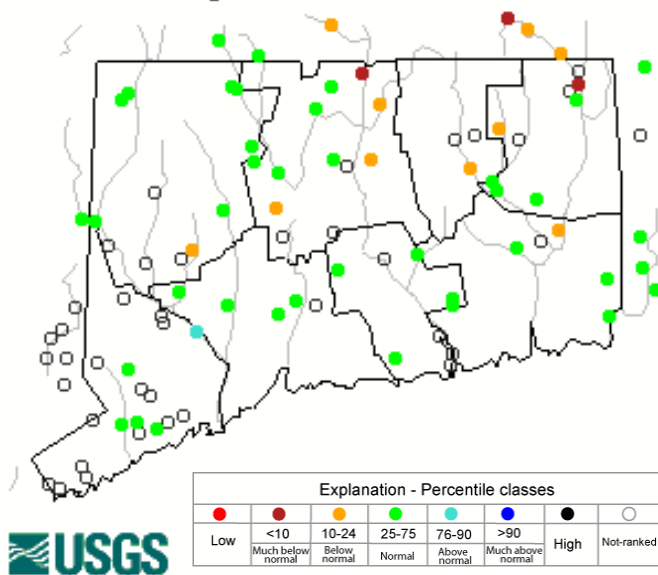
LAKE HOUSATONIC (drawdown). The lake will be drawn down three feet from **Monday, June 11, through Friday, June 15**, for dam maintenance. Launching trailered boats from the state boat launch will be very difficult to impossible.



Coventry Lake (Wangumbaug Lake) boaters should avoid the areas noted with red dots to avoid fragmenting and spreading hydrilla.

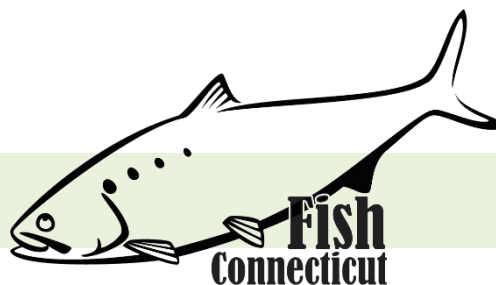
STREAM FLOW CONDITIONS

Thursday, June 07, 2018 19:30ET



Data in the state graphic to the left are generated by the United States Geologic Survey (USGS) and are available on line at: <http://waterdata.usgs.gov/ct/nwis/rt> A percentile is a value on a scale of one hundred that indicates the percent of data in the data set equal to or below it. For example streamflow greater than the 75th percentile means only ¼ of the streamflow values were above the value and thus would be considered “above normal”. Stream flow between the 25th and 50th are considered to be “normal flows” and those 25th or less are considered to be “below normal”.

MARINE FISHING REPORT



Surface water temperatures in Long Island Sound (LIS) are in the 50's °F to around 60 °F. Check out the following web sites for more detailed water temperatures and marine boating conditions:

<http://www.mysound.uconn.edu/stationstat.html>

http://marine.rutgers.edu/mrs/sat_data/?nothumbs=1

<http://www.ndbc.noaa.gov/>

<http://www.wunderground.com/MAR/AN/330.html>

Connecticut State Boundary Line in Long Island Sound. Anglers please note: Though Connecticut has reciprocity with neighboring states (New York, Rhode Island, Maine and Massachusetts), residents of Connecticut are required to have a CT Resident Marine Waters or All Waters Sport Fishing License to fish in the Marine District.

SHORE FISHING SPOTS & TIDE TABLE INFORMATION To find a saltwater shore fishing spot close to where you live, go to the following website: <http://www.lisrc.uconn.edu/coastalaccess/>.

For **ENHANCED OPPORTUNITY SHORE FISHING** sites and other fishing information including a site map go to the following website <http://www.depdata.ct.gov/maps/saltwaterfish/map.htm>.

Please see page 64 of the **2018 CT Angler's Guide** for CT tide information.

FROM THE ANGLERS: This past week, top water and swimming plugs or jigs with squid were the ticket. Soft plastics seemed to be less effective.

Notable catches included mostly fluke; a 23" inch Fluke (NY waters), several shorts, and a 19.5.

STRIPED BASS fishing is good. The rivers are still producing great (schoolie) Striped Bass action including; Thames River, Connecticut River, Housatonic River and most of the larger rivers from the Rhode Island border to New York. From shore, anglers are having great success with Sand Worms and by boat trolling spoons, mojos, Bunker spoons, and any 4"-6" soft plastic with a lead head and umbrella rigs are also productive. Larger Striped Bass (winter holdovers) are still in the rivers, but are starting to move outside the rivers and following the shoreline. At the same time larger migrating Bass entering the sound from the New York border and Block Island Sound are investigating our rivers in search of food. CT DEEP Field Interviewers have found that a fisher might need to catch 15 schoolies before they land 1 keeper-sized Bass (28"). The last and first couple of hours of flood tide has been most productive, but specifically the first two hours of the outgoing tide has been most rewarding this week. The evening bite is hot and fishers are catching bass up to 46". Outside the rivers the action from Rye, NY, off Rye's Playland to Norwalk has been fantastic. Anglers are catching and releasing 50-pound Stripers in hopes their off-spring will multiply (pun intended) the number of trophy fish. Those larger Bass are getting hooked with fresh Atlantic Menhaden (Bunker), in fact some bait shops are having trouble keeping Bunker in stock. Schools of Atlantic Menhaden are swimming back and forth between the Norwalk Islands and New Haven. Most of our Enhanced Opportunity Shore locations are giving Anglers thrills while landing large Bass. This week the hot spots have been; **Todd's Point and Captains Island in Greenwich, Stamford's Cummings Beach, Calf Pasture Beach Pier, Sherwood Island State Parks' boulders, Bonds Dock,**

Walnut Beach, Gulf Beach Pier and jetty, Sandy Point, Bradley Point and Fort Nathan Hale Pier. Other outstanding locations are at Plum Gut, The Race, South of Millstone Power Plant, Two Trees Island, Cockinoe Island, Middleground, Peconic Bay and South of Fishers Island. The largest fish have been caught live-lining American Eels and Atlantic Menhaden. But you might even hook one with a buck tail tipped with a Sluggo, Gulp, or trolling with a larger umbrella rig. Offshore these stripers are big enough to qualify for the [CT Trophy Fish Award Program](#)

Please use circle hooks when fishing with bait to prevent gut hooking and practice catch & release.

SCUP (porgy) have strengthened in numbers this week. Hubcap-sized Scup are still weighing down your favorite party boats in Peconic Bay and Cherry Harbor with the use of a high-low rigs tipped with clams. And shore spot action is really yielding winners. A high-low rig tipped with Clams (or double your chances with Clams PLUS Squid) and you'll benefit with reeling in Scup up to 19 inches this weekend. There was also a good run of Scup this week at Fort Nathan Hale Pier. Don't forget Fort Nathan Hale Pier is an Enhanced Opportunity Shore Fishing Program site so you'll be able to keep a smaller Scup or Summer Flounder. Porgy are beginning to show-up this month at Fort Trumbull and Avery Point as well. In fact, most of the Enhanced Opportunity Shore spots from New Haven to Stamford are causing sore arms and backs as Fishers reach their limit of 30 in 1/4 day of fishing. Bonds Dock in Stratford and the Stratford Wall as well as Calf Pasture Jetty and Pier are excellent locations this week.

Time to plan a trip on a party/charter boat in CT. [CT Party Boat Association](#). I mean giant porgies measuring 14-18 inches ("hubcap size") have been caught! Porgy fishing has also been reported at these shore fishing locations: Todd's Point, Calf Pasture beach Pier, **Sherwood Island State Park**, Rocky Neck State Park, Meigs Point Hammonasset State Park and Fort Trumbull State Park. Locate your favorite [Enhanced Shore Fishing Opportunities](#) for these excellent eating "Reef Slammers". These "panfish of the sea" are easily caught on sandworms/cut squid or any other small piece of bait. Contact your [local bait and tackle shop](#) for updated fishing information.

SUMMER FLOUNDER (fluke) fishing is on the rise this week. Buoy 32-A, most of the Rye, NY Playland Park Buoys, Captains Island off Greenwich, Little Captains Island and the wrecks all in the greater are presenting keeper-sized Fluke. Green Buoy "C" off of the Stratford Shoal Lighthouse has also been actively but successfully fished for Fluke AND Black Sea Bass AND Scup AND Striped Bass, Bluefish as well as Striped Searobin. In Niantic Bay we're talking 6-8 pound Fluke being landed this week in just a couple hours, using Bass Assassins and Buck-tails tipped with Squid - and Fluke targeting during the flood tide has been most fruitful, according to Anglers who called CT DEEP with accurate reports, which were called in via phone to our Old Lyme office. We always are appreciative of groups or individuals who call our office regarding any sightings of important marine activity. CT DEEP Marine Fisheries is incredibly grateful to your contributions and your information makes a significant verbal endowment to our data. As you know, "better data = better Fishing." As we continue discussing Summer Flounder; Montauk, the South side of Fishers Island and the Rhode Island/CT shore border are also excellent locales this week for Fluke as the Squid begin to march into Long Island Sound from Block Island Sound. At the Thames River Fluke up to 25 inches have been reported and there's been some large schools of Squid entering via Fishers Island as well with Summer Flounder hunting close behind. In the Greenwich to New Haven area keepers are being caught with buck-tails, Spearing, Squid and Gulp at Captains Island, Todd's Point, Fish Island off of Darien (Fish Island is just 1/3 mile South of Rowayton's Five Mile River), off Hickory Bluff Bridge in the Rowayton section of Norwalk (cast to the left in the mud flats as you face Tavern Island) off Calf Pasture Beaches Sand Bar you'll land a Summer Flounder, the Norwalk Islands and Pennfield Reef are also producers this week. The bite is getting better and doormat Fluke are being caught in Peconic Bay. Try dunking a high-low rig tipped with squid and clams, which provides them a broader menu to choose from. More Searobins are being kept this year than ever and anglers are sharing recipes while fishing. But the belly of a Searobin is like Prime Rib to a Summer Flounder (Fluke), so keep that in mind. Fluke are also fond of Silversides. If you're not a bait lover...bucktails work well on Fluke as well as Berkeley Gulps. Summer Flounder

are being caught from the Housatonic to the West Haven Sand Bar mostly, and fishing at first light is very effective.

Fluke spots include the typical locations: Smithtown Bay, Buoy #26, south shore of Fishers Island (Isabella Beach, Wilderness Point), Napatree Point and along the beach, off the Stonington breakwater, mouth of the Mystic River to Groton Long Point, Thames River channel, Two Tree Island channel, Black Point/Niantic Bay/River, Long Sand Shoal, Westbrook-Clinton area, Falkner Island area, West Haven to Woodmont, New Haven Harbor including by the breakwaters, off the mouth of the Housatonic River, and around the Norwalk Islands. Since squid are coming in, offering a live one on the bottom (10-40 feet) would be a good move for catching that big slab "doormat" fluke! Try drifting with a white or pink Spro Bucktail jig with a Berkely 3" - 4" Gulp Mullet in chartreuse, white or pink color. Fresh squid and or silversides (spearing) have also been producing. **Minimum size is 19 inches and the daily creel limit is 4 fish per person.** Time to get the boat, and fishing gear ready for some phenomenal early season fluke fishing. [CT Bait & Tackleshop List](#)

BLACK SEA BASS fishing is pretty good in LIS. The early season hot spots are Falkner Island, the Middlegrounds, Buoy 32A, Green Ledge Lighthouse, Cockenoe Islands, Six Mile Reef and from New Haven to Woodmont. Fishing over any deep water structure in 30 to 100 ft around slack tide will produce some trophy-sized "humpbacks". Fish shallower and you will catch plenty of keeper-sized sea bass. It's important to continue to move from structure to structure to find these beautiful and awesome eating fish. ht now they are hooking and releasing them from Two Tree Island, Buoy 32-A and buoys, wrecks, lighthouses and piers between Greenwich to Stonington. They are sporadic right now and are mostly shorts. However, they are a beautiful species and put up a nice little fight when. BSB are often mixed in with a Scup schools, they too prefer high-low rigs tipped with clams and squid. **Minimum size is 15 inches and the daily creel limit is 5 fish per person.**

BLUEFISH have been following Striped Bass schools. These sharped tooth fish will eat anything. Most of the ones caught and kept this week have been in the 27" range. Bluefish schools have also been infrequent, but just about every Enhanced site has produced at least a few. This week they have been mostly in Little Peconic Bay, Middleground, Norwalk Islands, Greens Ledge Lighthouse, Todd's Point, Stratford Shoals and amidst Striped Bass schools where they have an easy time picking up scraps. The **Bridgeport Discharge, Western Long Island Sound Weather Buoy, Little Peconic Bay and Seaside Park** have been hot spots this week along with **Norwalk Harbor**. "Blues" will eat anything that smells like fish and almost any lure will work. However, they are not hitting surface plugs hard just yet so dunk an Atlantic Menhaden (Bunker chunk) down along the bottom.

WEAKFISH West Haven, West Haven, West Haven. Did we mention West Haven? Also, New Havens West Wall. Weakfish are also being caught at the West Haven Sand Bar, Walnut Beach in Milford, Charles Island and Long Beach in Stratford as well as the Norwalk Islands and Big Captains Island off Greenwich.

STRIPED SEAROBIN fishing is good in LIS. Poor Man's Lobster are still being kept this week for Fluke Bait and as a great source of protein and a nice meal. Previous years the great majority of them were released, causing an explosive increase in numbers. These are living creatures and should be respected. However, their bellies are on par with Squid as the Summer Flounders favorite food AND they are low in fat and taste pretty good. They have been known to eat juvenile Summer Flounder and Scup - so the eco-system and moreover Summer Flounder and Scup will appreciate it if you take a Striped Searobin home for dinner. The meat is mostly in the tail so you may need to catch a few to make a good meal.

HICKORY SHAD fishing is good in the lower Connecticut River by the **DEEP Marine Headquarters fishing pier**. Connecticut Tarpon (Hickory shad) can be found mixed in with schoolie striped bass and American shad. Flood or ebb tide is best and lures of choice are a willow leaf (silver), kastmaster (single hook), small plastic jigs (white or chartreuse), and or shad darts in various colors.

Need a fishing spot you've never been to? Want to know details about the site like coordinates? Are there nearby restaurants, is there an adequate amount of parking spaces and more? Just visit the site below, click guest and then on the next screen select the state of Connecticut;

<https://www.st.nmfs.noaa.gov/msd/html/siteRegister.jsp>

LEARN TO FISH WITH THE PROS. We talked with many Party/Charter Boat Captains this week who are looking forward to the 2018 deep sea fishing season. They start fishing this month, so make those reservations. Marine anglers bring a great deal of money into the local economy via; hotels, delis, restaurants, bait & tackle shops, Charter & Party Boat businesses, convenience stores, and much more. Anglers provide invaluable data and information to the **MRIP (Marine Recreational Information Program)**. These are the courteous and hard-working CT DEEP Field Interviewers that you see after your fishing trips at coastal access sites. We thank you for your participation, and the local communities thank you tremendously.

IMPORTANT NOTE to ANGLERS: there are many reports of **leaping sturgeon** in the lower CT River (Essex to the Old Saybrook). A common spring behavior for these **endangered fish species (Atlantic and shortnose)** as they attempt to gulp air for their primitive swim bladder. Anglers are incidentally snagging or catching these sturgeon while bottom fishing. Please release all sturgeon without avoidable harm as their populations are slowly recovering and are at VERY low levels. They are a protected species. Thank you.

For Current Connecticut Recreational Fishing Regulations: Anglers should consult the 2018 Connecticut Anglers Guide which is now available at most Town Clerks Offices, DEEP offices and at tackle stores selling fishing licenses. Current regulations, electronic versions of the Angler's Guide and additional information can all be accessed on the DEEP website at: www.ct.gov/deep/fishing.

PLEASE CALL 1.800.842.4357 TO REPORT FISHING VIOLATIONS.

The Connecticut Department of Energy and Environmental Protection is an Affirmative Action/Equal Opportunity Employer that is committed to complying with the requirements of the Americans with Disabilities Act. Please contact us at (860) 418-5910 or deep.accommodations@ct.gov if you have a disability and need a communication aid or service; have limited proficiency in English and may need information in another language; or if you wish to file an ADA or Title VI discrimination complaint.

DEEP WEEKLY Fishing Report



Connecticut Department of
ENERGY & ENVIRONMENTAL PROTECTION

79 Elm Street, Hartford, CT 06106

www.ct.gov/deep